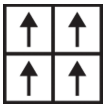


Array Tile

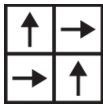
Product Type	Carpet Tile	
Collection	Simply By Nature	
Style Number	5T317	
Construction	Multi-Level Pattern Loop	
Fiber	Ecosolution Q® Nylon	
Dye Method	100% Solution Dyed	
Primary Backing	Synthetic	
Secondary Backing	Ecoworx® Tile	
Protective Treatments	SSP® Shaw Soil Protection	
	u.s.	metric
Product Size	24 in x 24 in	61 cm x 61 cm
Area Per Carton	80 ft²	7.43 m²
Pieces Per Carton	20 pcs	
Gauge	1/10 in	39.4 per 10 cm
Stitches	10.0 per in	40.5 per 10 cm
Average Density	5818 oz/yd³	0.215 g/cm³
Kilotex		8.78
Total Thickness	0.225 in	5.72 mm
Tufted Weight	16 oz/yd²	542.5 g/m²



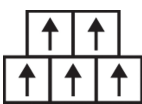
Recommended Installation Method



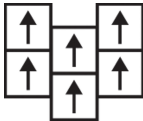
Monolithic



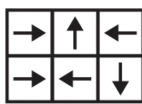
Quarter Turn



Brick



Ashlar



Random

Data + Testing

Radiant Panel	Class I
Nbs Smoke	Less Than 450
Electrostatic Propensity	Less Than 3.5 kv
Pill Test	Pass*
Ada Compliance	>0.6, Meets the recommended static coefficient of friction for ADA walking surfaces and accessible routes***

Test Reports may be included or listed by the manufacturing/inventory style number as opposed to the noted selling style number.

Warranties

Lifetime Commercial Limited

Coordinating Products

Carpet Tile: **Arrange Tile, Offset Tile, Structure Tile**

Broadloom: **Amend, Accord**

Material Health & Environmental Certifications

Certifications Below Apply Exclusively To The Carpet Tile Rug Itself And Not The Lokworx Tabs Adhesive

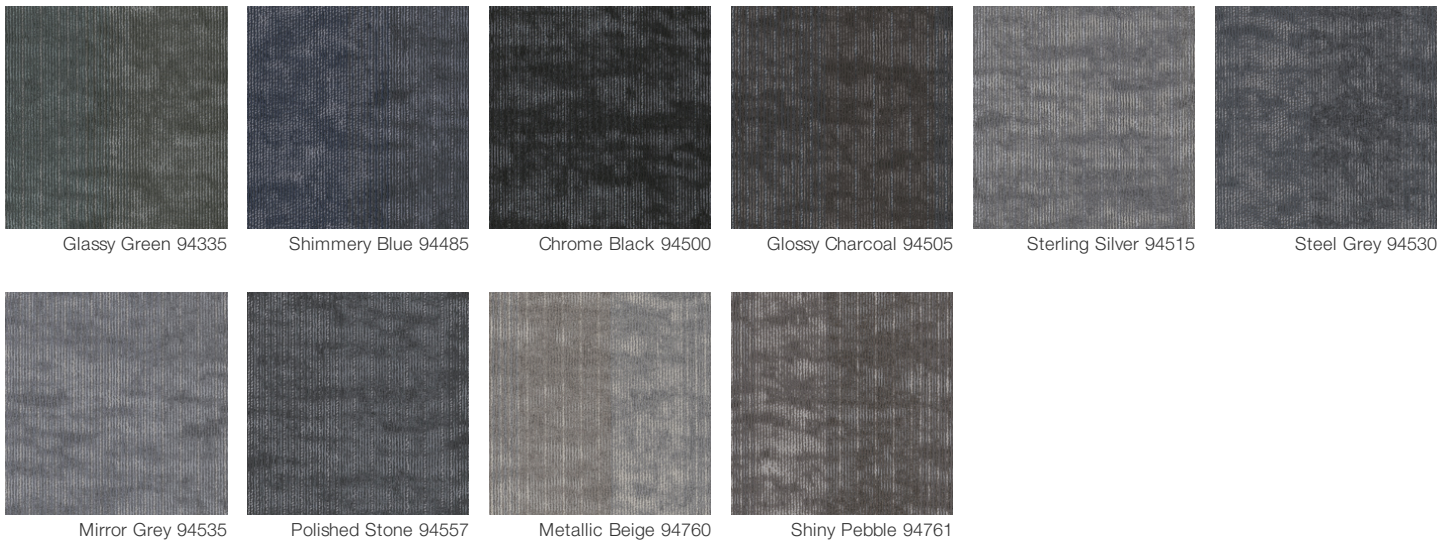
Climate Impact

Embodied Carbon (Cradle to Gate)	10.7 (based upon 19.6 oz face weight) kg CO ₂ /m ²
Life-Cycle Carbon Emissions****	Carbon Neutral
Total Recycled Content	39% (Pre-Consumer 39% Post-Consumer 0%)

Global Product Assessment

Country of Origin** | China

Available Colorways



Additional Information

***This carpet is manufactured to be ADA compliant, but to be fully ADA compliant, the end-user must ensure the carpet is adhered to the floor and installed as outlined in the ADA standards.

****Life-Cycle is modeled from US manufacturing.

Specifications are subject to nominal manufacturing variance. Material supply and/or manufacturing processes may necessitate changes without notice.

This product is an exclusive design and may not be duplicated in any manner. Use of this design in the creation of another product design is also strictly prohibited.

Visit shawcontract.com/testing for more information.